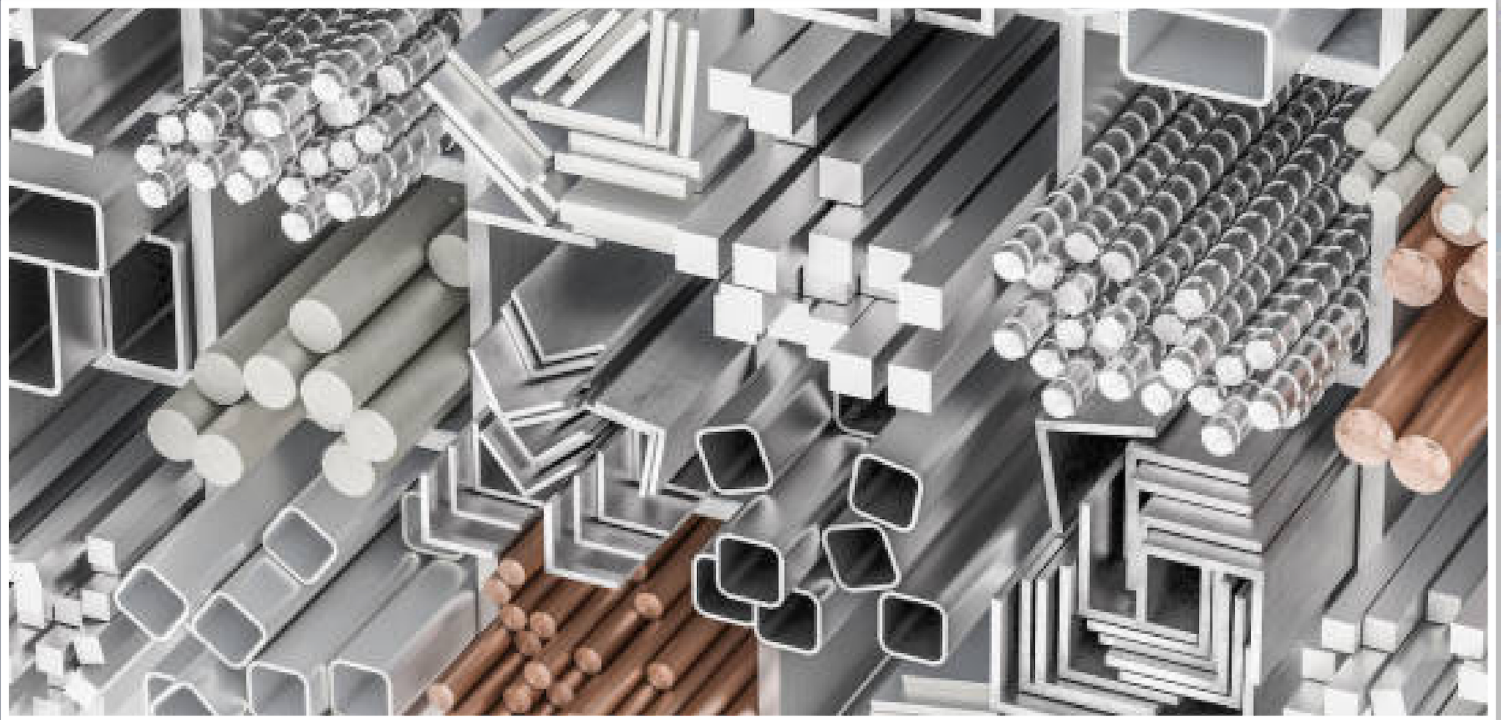




BHAVANI METAL & WORKS

RAKHIAL, AHMEDABAD, GUJARAT



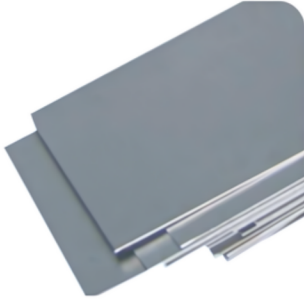
- Stainless Steel
- Carbon Steel
- Tubes Pipes
- Sheets Plates Rods
- Ferrous & Non Ferrous



Bhavani Metal & Works

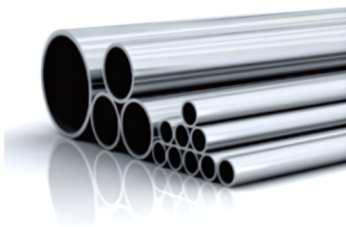
13, Shree Rajeshwar estate, Inside Janak Estate, Chakudiya Mahadev Road, Rakhial,
Ahmedabad, Gujarat - 380023

PRODUCT



SHEETS, PLATES & COILS :

Grades	: 200, 300, 400 Series
Types	: Foils, Shims, Chequered Plate, Perforated Sheet, Strips, Etc.
Finish	: HR, CR, 2D, 2B, Satin, Matt, Mirror, PVC Coated etc.
Thickness	: 0.1 mm to 125mm
Sizes	: Any size as per customer requirement up to 2500 mm width is possible
Make	: Jindal, Sail, Imported
Nickel Alloys	: Monel, Inconel, Hastalloy, Nickel, Cupro Nickel, Titanium, Duplex, Super Duplex etc.



PIPES & TUBES :

Grade	: 200, 300, 400 Series
Types	: Round, Square, Rectangular
ASTM	: SA 312, SA 213, SA 249, SA 269, SA 270 etc.
Sizes	: 1/4" NB - 24" NB (Seamless) 1/4" NB-48" NB (ERW)
Thickness	: SCH 5S, SCH 10S, SCH 20S, SCH 40S, SCH 80S, SCH 120S, SCH 160S, SCH XXS
make	: Jindal, IMPORTED
Nickel Alloys	: Monel, Inconel, Hastalloy, Nickel, Cupro Nickel, Titanium, Duplex, Super Duplex etc.



BUTTWELD FITTINGS :

Types	: 45°, 90° & 180° Elbow & Bends, Equal Tee & Un Equal Tee, Short & Long Neck Stuband, Concentric & Eccentric Reducers, Pipe End Caps, Cross etc.
Stainless Steel	: ASTM A403 Wp304, 304L, 304H, 316, 316L, 316Ti, 321, 309, 310, 347, 904L etc.
Carbon Steel	: ASTM A234 WPB
Alloy Steel	: ASTM A234 WP1, WP5, WP9, WP11, WP22, Wp91
Dimension	: ANSI B16.9, MSS SP-43
Size	: 1/4" NB - 24" NB (Seamless) 1/4" NB-48" NB (ERW)
Thickness	: SCH 5S, SCH 10S, SCH 20S, SCH 40S, SCH 80S, SCH 120S, SCH 160S, SCH XXS
Nickle Alloys	: Monel, Inconel, Haslloy, Nickel, Cupro Nickle, Titanium, Duplex, Super Duplex, Etc.

FLANGES :



Types	: Slip-on, Blind, Lap Joint, Loose, Screwed, Socket Weld, Weld Neck, Orifice, Spectacle Blind, Threaded etc.
Flange Facing	: Raised Face, Flat Face, Small & Large Male-Female, Small & Large Tongue & Groove, Ring Joint.
Dimension	: ANSI B 16.5 DIN Standard, JIS Standard, BS 10 Etc.
Standard	: 12h#, 150#, 300#, 600#, 900#, 1500#, 2500#, 3000#, 5000# & 10000# Table D, E, F, H, ND 6, ND 10, ND 25, ND 16, ND 40, ND 64, ND 100 etc.
Stainless Steel	: ASTM A240, ASTM A 182 F304, F304L, 304H, 316, 316L, 316H, 316Ti, 321, 309, 310, 347, 904L etc.
Carbon Steel	: ASTM A105, IS 2002, IS 2062, A516 Gr. 70
Alloy Steel	: ASTM A182 F1, F5, F9, F11, F12, F22, F91
Size	: 1/4" NB to 48" NB



+91-9727695263



bhavanimetalworks13@gmail.com



Bhavani Metal & Works

13, Shree Rajeshwar estate, Inside Janak Estate, Chakudiya Mahadev Road, Rakhial,
Ahmedabad, Gujarat - 380023

PRODUCT

FORGED FITTINGS :

Types : 45° & 90° Elbow, Equal Tee & Un Equal Tee, Concentric & Eccentric Reducers, Union, Couplings, Caps, Cross, Bushing, Plugs, Hex Nipples, Swage Nipples, Barrel Nipples, Hose Nipples, Wedolet, Sockolet, Thredolet, Nipolat etc.

Class : A1500#, 3000#, 6000# & 9000#

Size : 1/4" NB to 4" NB (Socket Weld & Threaded)



RODS, HEX, SQUARE & WIRES BARS :

Grade : 200, 300, 400 Series (Specialist in SS 303 Grade), etc.

Types : Round, Square, Rectangular, Wire, Billet, Wiremesh, Ingot, Block, Forging etc.

ASTM : SA 276, SA 314, SA 479, SA 482, SA 582

Sizes : 0.5 mm to 300 mm

Finish : Bright, Black & Polished

Nickel Alloys : Monel, Inconel, Hast Alloy, Nickel, Supro Nickle Titanium, Duplex (2205, 2507) & 17 - 4PH



CIRCLES, RINGS & PROFILES :

Grade : 200, 300, 400 Series

Types : Circles, Ring, Profiles etc.

ASTM : SA 276, SA 314, SA 479, SA 482, SA 582

Sizes : 0.5 mm to 300 mm

Finish : Bright, Black & Polished

Nickel Alloys : Monel, Inconel, Hast Alloy, Nickel, Supro Nickle Titanium, Duplex (2205, 2507) & 17 - 4PH



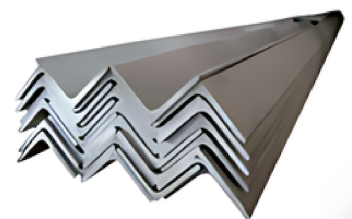
ANGLES & CHANNELS :

Grade : 200, 300, 400 Series

Thickness : 2 mm to 25 mm

Sizes : As per customer requirement.

Types : Equal & unequal



+91-9727695263



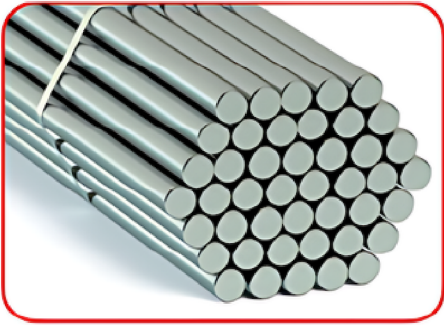
bhavanimetalworks13@gmail.com



Bhavani Metal & Works

13, Shree Rajeshwar estate, Inside Janak Estate, Chakudiya Mahadev Road, Rakhial,
Ahmedabad, Gujarat - 380023

OTHER PRODUCTS



S.S. Round Bar



S.S. Flats Bar (Patti)



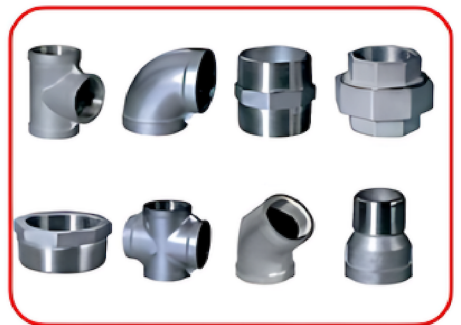
S.S. Square Bar



S.S. Hex Bar



S.S. Butweld Fitting



S.S. Investment Casting Fittings



S.S. Bush Pipe



S.S. Pipe (Big Diameter)



S.S. Flanges



S.S. Butterfly Valves



S.S. Ball Valves



S.S. Nut Bolt



+91-9727695263



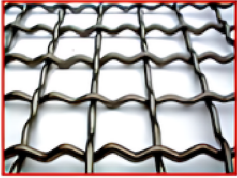
bhavanimetalworks13@gmail.com



Bhavani Metal & Works

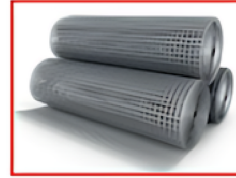
13, Shree Rajeshwar estate, Inside Janak Estate, Chakudiya Mahadev Road, Rakhial,
Ahmedabad, Gujarat - 380023

WIRE MESH & PERFORATED SHEET



CRIMPED MESHES

Heaviest 12MM thick in Spring -
Steel, Stainless Steel,
High Carbon - High Tensile,
G.I., / M.S., Etc



WELDED WIRE MESH / FABRICS

These are Supplied in M.S./ G.I.,
Stainless Steel In Different Widths &
Required Size, Mesh & Gauge.
ALSO ANGULAR / DEGREE



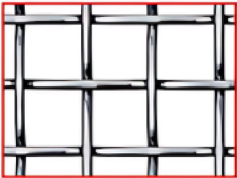
VIBRATING WIRE WOVEN SCREENS

(WITH WITHOUT PANELS)
Plain ends or with side Panels Supplied to
the Reqd. Sizes, Aperture, Dia in diff
M.S., High Carbon, High Tensile etc,
Correct to Cut Sizes, Also Vibrating Machines



EXPANDED METALS

Are kept in M.S./ ALUMINIUM
G.I. Stainless Steel Of Fine to bigger holes
& in Different thickness, widths, strands etc.,
Supplied in different size & width, Also
Flattened Expanded Metals.



EXTRA - HEAVY

(Upto 10mm thick Rod)
Wire Meshes in S.S./G.I.,/ P.B.,/ Spring Steel/
M.S.,/ Aluminium, Brass, Copper
Filter - Cloth etc. Supplied in cut
to Size in Rectangular Mesh, Hollander
Mesh, Dutch Weave Plain Weave, Twill
Weave, Five Shaft Weave and
other type of Weaves.



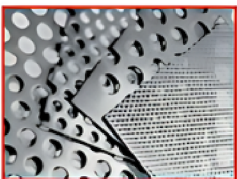
MIST ELIMINATOR, DEMISTER PADS

Thes are Supplied Mostly in S.S Wire elth
S.S. Grid frames to the Reqd. Size,
For the Seperation of Mist & Entrained
liquid from Vapour Stream



FINE MESHES

IN Stainless Steel, G.I., G.I.D.,
Stainless Steel, P.B., Brass, Copper,
Nylon, Etc., As per ISS/BSS/ASTM/
Tyler upto the finest Microns & Meshes.



PERFORATED SHEET

Manufacturer of a wide range of products which include gi perforated sheets.

Quality	: SS, MS, GI, Aluminium, Copper, Brass
Apertures	: 0.3mm and finer.
Finish	: Available in rolls or in cut circles and also as fabricated filters.
Construction	: Woven with plain or twill weaves.
Materials	: Inconel, Monel, Titanium, Stainless Steel, Phosphor Bronze, Brass, Copper, Nicke
Applications	: Filters elements, Bolting cloth for screen printing, Dust removing screens, Chemical and Pharmaceutical sieving.



+91-9727695263



bhavanimetalworks13@gmail.com



Bhavani Metal & Works

13, Shree Rajeshwar estate, Inside Janak Estate, Chakudiya Mahadev Road, Rakhial,
Ahmedabad, Gujarat - 380023

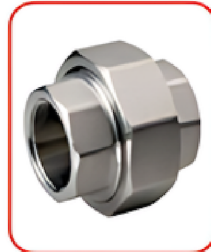
DAIRY FITTINGS



TC Hose



Expandable Union



IC Union



SMS Union



Spray Ball



Spray Ball



Ferrule Blind



CamLock Coupling



Plug



Hex Nipple



Coupling



Too



Check Nut



Cross Too



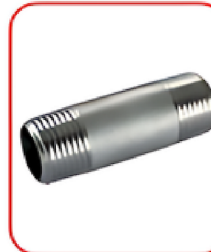
Elbow



Reducer



Hose Nipple



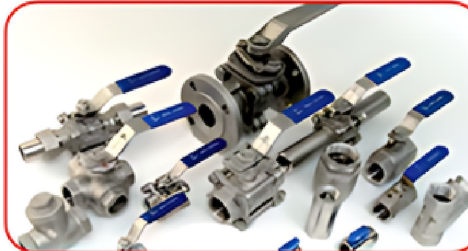
Barrel Nipple



Con. Reducer



Ecc. Reducer



Ball Valves



Valves



Female



Female



Female



Union Elbow



Un



+91-9727695263



bhavanimetalworks13@gmail.com